



# Mobile

## Hang a Mobile anywhere you like!

### Instructions:

1. Print out all of the mobile pages.
2. Cut out all of the pieces along the dotted lines.
3. Remember to ask an adult for help when cutting!

### Characters (B):

1. Fold each character piece in half and glue to hold.
2. Punch a hole at the top of each character where the circle is located.
3. Tie a piece of string to each hole.

### Background (A):

1. Glue one side of the first piece (A1) to the opposite side of the second piece (A2) to make one long piece.
2. Fold the two attached pieces together to form a cylinder and glue to hold.
3. Punch 4 holes at the top of the cylinder.
4. Tie string through the 4 holes at the top of the cylinder to hang.
5. Punch 8 holes at the bottom of the cylinder.
6. Using string, tie each of the 8 characters to the holes in the cylinder.
7. Now find the perfect place to hang your mobile!





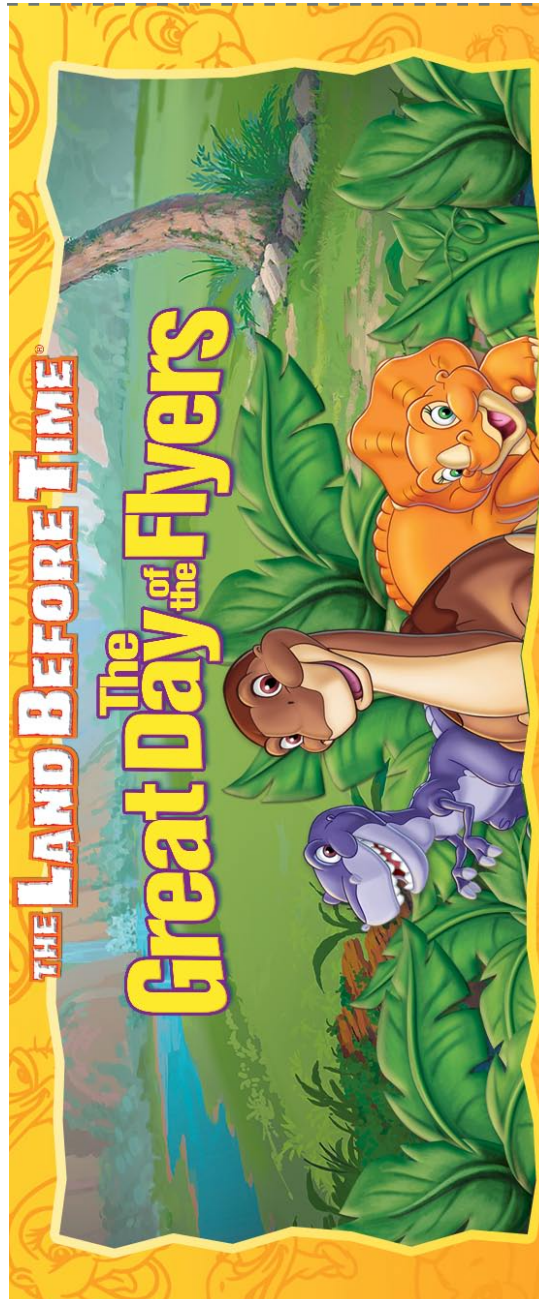


Mobile

(A2)

cut here ✂

glue here →



2

THE LAND  
BEFORE TIME

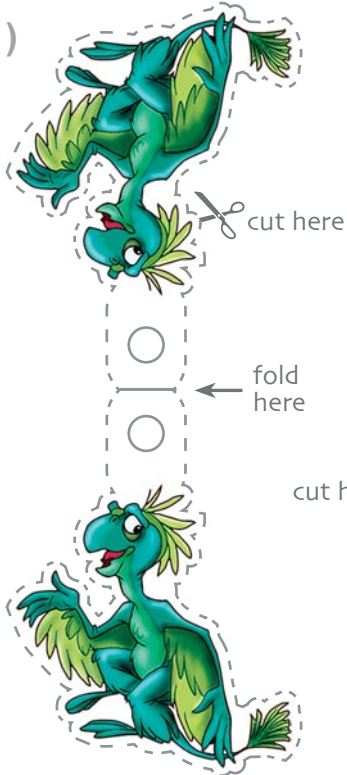
© 2007 Universal Studios. Bring Home the All-New Movie on DVD • February 27 [www.landbeforetime.com](http://www.landbeforetime.com)



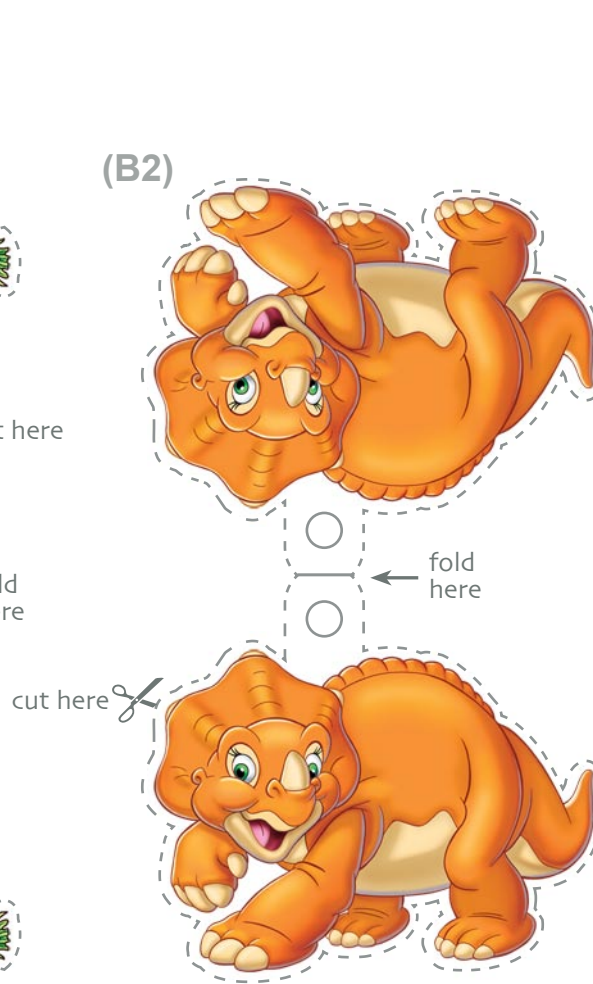


# Mobile

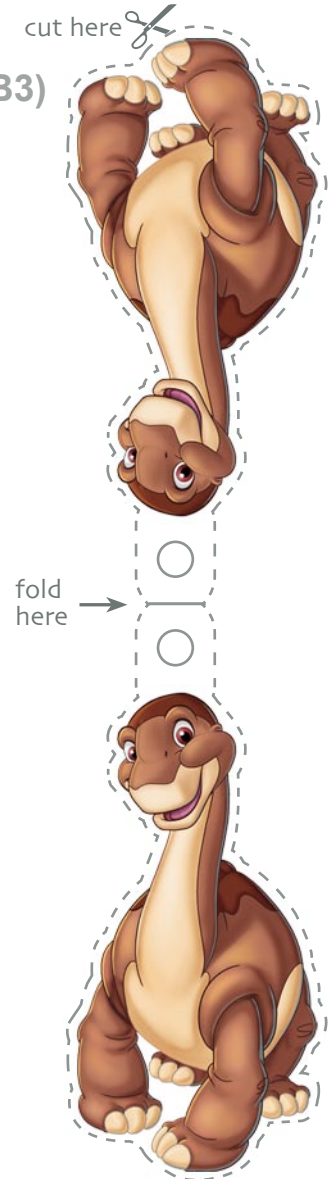
(B1)



(B2)



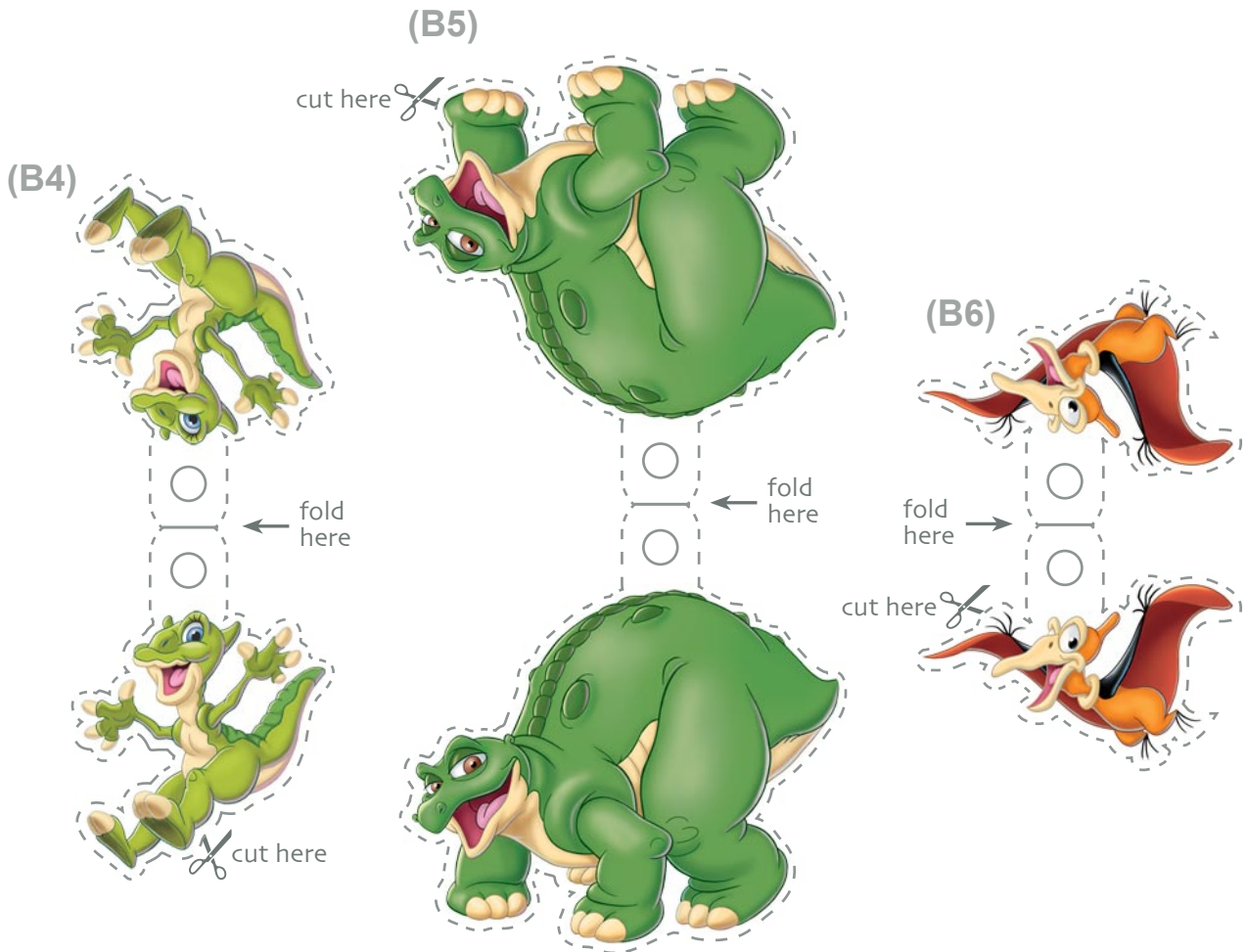
(B3)



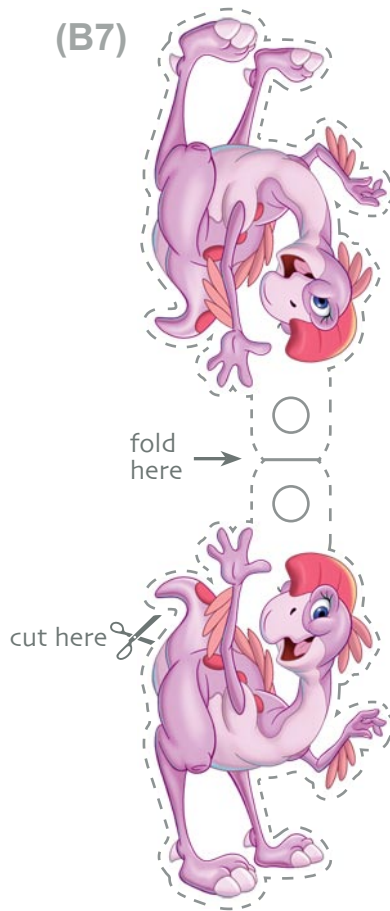
3

THE LAND  
BEFORE TIME

© 2007 Universal Studios. Bring Home the All-New Movie on DVD • February 27 [www.landbeforetime.com](http://www.landbeforetime.com)



(B7)



(B8)

